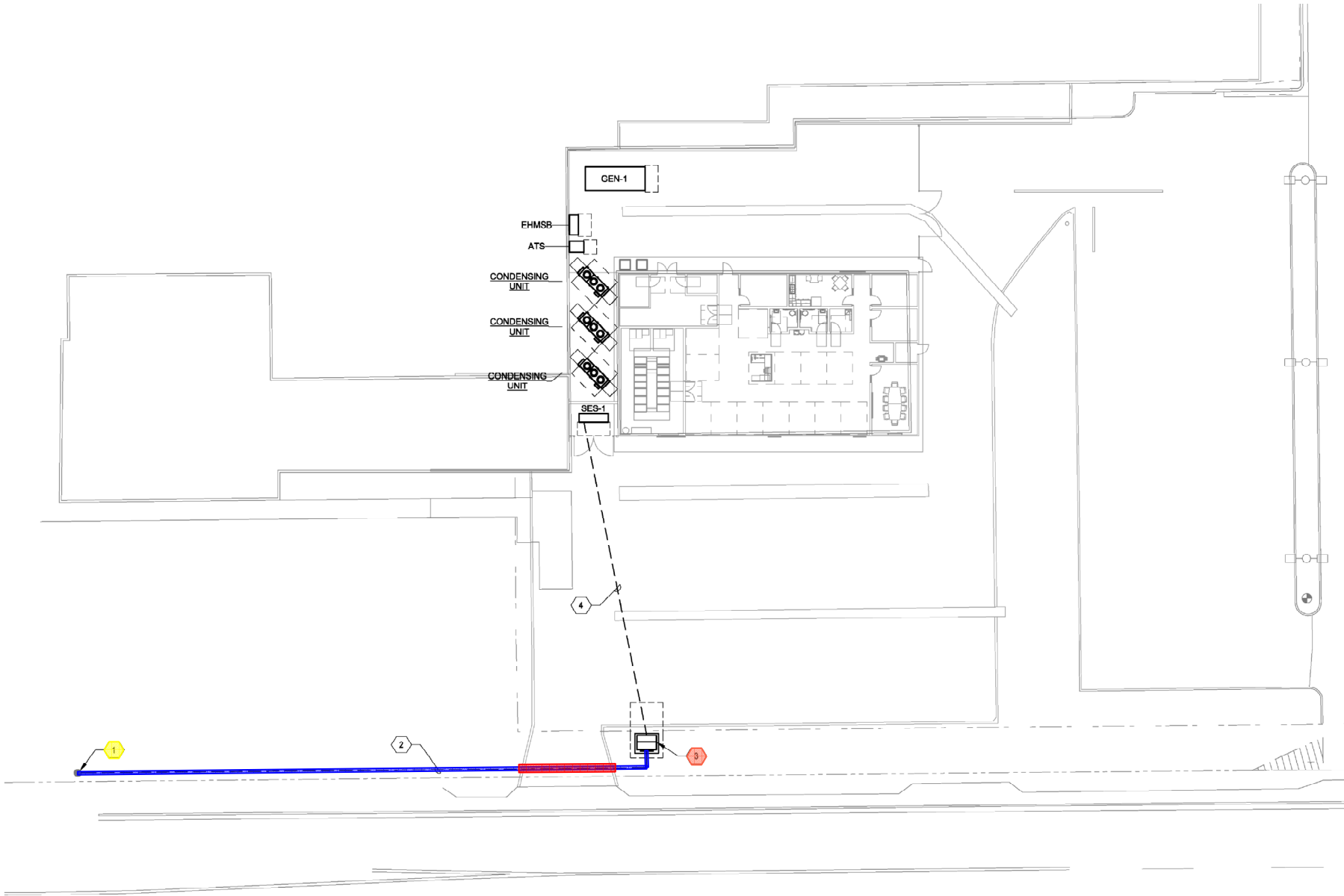


- Provide riser down existing APS utility pole to serve new transformer - Q1 1 EA
- Primary Feeder /Trench / Backfill / Conduits / Concrete Encased - Q1 180 LF
- Provide concrete housekeeping pad for APS Transformer - Q1 1 EA
- Remove and replace existing curb / asphalt @ Drive Entrance (or Bore) - Q1 30 LF



1 ELECTRICAL SITE PLAN
1" = 20'-0"

0' 10' 20'



KEY NOTES

1. PROVIDE RISER DOWN EXISTING APS UTILITY POLE TO SERVE NEW PAD-MOUNTED UTILITY TRANSFORMER. COORDINATE REQUIREMENTS WITH UTILITY PRIOR TO BID.
2. NEW PRIMARY FEEDER TO NEW UTILITY TRANSFORMER. PROVIDE TRENCHING AND BACKFILL FOR NEW PRIMARY POWER CONDUITS PER APS REQUIREMENTS. WHERE REQUIRED BY NEC 300.5 AND BY APS, ALL UNDERGROUND FEEDERS SHALL BE ENCASED IN CONCRETE. COORDINATE WITH ALL UNDERGROUND UTILITIES PRIOR TO START OF WORK.
3. NEW UTILITY TRANSFORMER BY APS. PROVIDE CONCRETE HOUSEKEEPING PAD. COORDINATE WITH APS FOR FINAL LOCATION AND REQUIREMENTS PRIOR TO START OF WORK.
4. TRANSFORMER SECONDARY WIRING. REFER TO ONE LINE DIAGRAM ON E-601 FOR WIRING AND CONDUIT SIZES.

GENERAL SHEET NOTES

1. REFER TO E-002 FOR ADDITIONAL INFORMATION.



DISTRICT SUPPORT FACILITY - BUILDING 10
PHOENIX UNION HIGH SCHOOL DISTRICT
2526 W. OSBORN RD
PHOENIX, AZ 85017
ELECTRICAL SITE PLAN

THIS DRAWING IS AN INSTRUMENT OF SERVICE & IS THE PROPERTY OF SPS+ARCHITECTS LLP & MAY NOT BE REPRODUCED OR REPRODUCTIONS HEREOF USED WITHOUT WRITTEN PERMISSION.

REVISIONS		
MARK	DATE	DESCRIPTION

REVIEWED BY: JMM
DRAWN BY: JRG

ORIGINAL ISSUE
DATE: 05/04/2022
JOB No: 2025
SHEET:

ES101